

24  
Dec/Jan 11

# BESPOKE

Arabian. Luxury. Lifestyle

10 USD / 37 QAR / 4 BHD / 37 AED



ULTIMATES



# Full steam ahead









158 vehicles | ultimate boat







At first glance it may look like a small futuristic battleship with its sleek lines and metallic figure, but in reality the long-range all-aluminium 50-metre Exuma motor yacht from Perini Navi is the ultimate luxury-meets-pleasure cruiser. The word 'pleasure' takes on a particularly powerful meaning as the yacht is designed – and richly specced – with onshore and offshore exploration in mind.

There's almost something of a James Bond factor in the Exuma as it unveils its tricks. One of these is a hovercraft, over 3.5 meters long, made by leading manufacturer Hov Pod and tucked safely in a seamless side garage. Beyond water, Hov Pods navigate through dunes and muddy waters on a cushion of air. For land-borne exploits, the Exuma also harbours an Iveco Campagnola all-terrain vehicle that measures five meters in length. This is a superlative 4x4 off-roader with an intriguing retro style, boasting all the mechanical components and know-how of the Italian brand – the commercial vehicle wing of the Fiat group. Additionally, a Sea-Doo RXT 250 jet ski, two electric land scooters and a couple of seabobs complete the array of tenders. As if this wasn't enough, the yacht also packs some impressive diving equipment to provide a well-rounded offering of adventure-laden opportunities.

The implications of such an array of equipment and the long-range power of the Exuma (a respectable 5,500 nautical miles at 12 knots, equating to over 10,000km) means you can, for example,

'While the Picchiotti shipyard may have been around since 1600, the firm's acquisition by the Perini Navi Group has brought it positively into the modern era.'

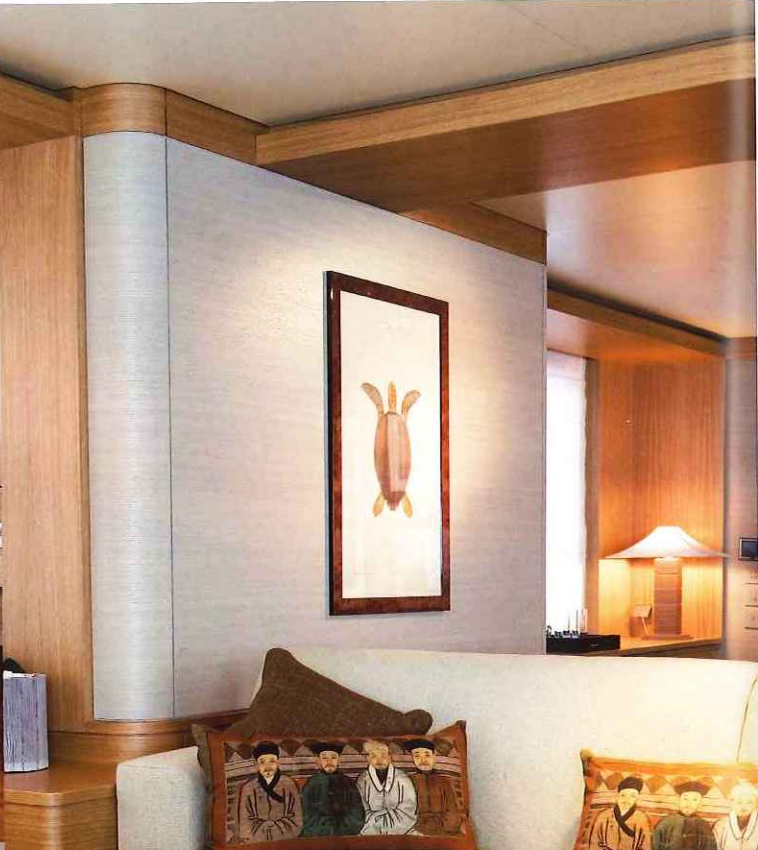
comfortably explore the entire Mediterranean Sea, from the easternmost point all the way to the westernmost point, and even return from where you started without the need to refuel. The Exuma emphasises the need of today's yachting enthusiasts to go beyond the sun, sea and sand formula and seek out a more intimate experience with the geography and nature around them. With a maximum speed of 16.5 knots, it has set out to achieve what others in its class only aspire to.

Beyond the extras and equipment however, the uniqueness of the Exuma lies in its design. While the Picchiotti shipyard may have been around since 1600, the firm's acquisition following the Perini Navi Group's decision to widen its scope of activity has brought it positively into the modern era. Exuma is the first vessel to be completed by the newly invigorated company and it belongs to a new generation of Picchiotti Vitruvius yachts using the services of UK-based yacht designers Vitruvius Ltd along with the naval architecture knowhow of Briand Yachts Design. The latter invented the BOS Hull (Briand Optimised Stretched Hull) that comfortably handles almost 500 tonnes of weight, with a displacement factor of 400 tonnes and reduced draught of 2.3 meters. This allows you to navigate in shallow waters despite the size of the yacht. Philippe Briand, now in his mid-fifties, has always had a passion for boats, designing his first sailing boat at the age of 16. After winning two World Championships as a skilled helmsman during the 1980s he moved on to win the Design of the Year award three times. This made him the ideal candidate to design the Picchiotti-Vitruvius series, which includes Exuma.

These days, critics of motor yachts and their design argue about the environmental impact of such an endeavour and its carbon footprint. Can such a pleasure cruiser be environmentally friendly? It turns out that ecological awareness is central to the new Picchiotti concept. Design specs for each boat are based on three pivotal principles of sustainability, efficiency and robustness. Briand espouses these principles wholeheartedly: "I find it hard to justify the reality of how these dream yachts will affect our environment and the basic livelihood of future generations," he says, "which is why I have designed this new breed of efficient, sustainable yachts."

The key focus was to reduce consumption and CO<sub>2</sub> emissions. One of the main ways was by significantly reducing the yacht's drag









**Above:** Exuma's interiors and exteriors were very cleverly designed to enhance comfort and privacy levels as well as affording superior exterior liveability.

**Opposite:** The interior décor and furnishings are the work of the Perini Navi interior design team and exude a wonderful atmosphere of classic seafaring tradition.

in the water when compared to other more traditional displacement yachts. The BOS Hull design boasts maximum hydrodynamic efficiency enabling the yacht to glide through the water with as little resistance as possible. Its stretched waterline length, reduced transom immersion, plumb bow and clean aft sections allow for easy flow on the propellers. And thanks to a reduced weight, balanced superstructure volumes and lower centre of gravity, there is less pitching and rolling, the added drag associated to ship motions. The efforts have obviously paid off as during her sea trials, Exuma achieved an impressive and class leading fuel consumption of just 9.8 litres per nautical mile (for a cruising speed of 12 knots and corresponding engine revolutions of 1,400-rpm). Moreover, in October 2010, the Registro Italiano Navale, one of yachting's most prestigious bodies, awarded the Exuma their Green Plus Platinum certificate and the title of Green Yacht of the Year; this was the first time a yacht of this type ever won the award.

With all this talk of eco-friendly advances, it's important to note that the luxury components haven't suffered. The interior is replete with natural wood finishes and Italian marble; we noticed three different types of wooden panelling on the main deck alone. A sliding glass door leads to the main salon, where you'll find just about any entertainment toy that takes your fancy, and a dining table that sits up to ten.

The bridge deck offers sweeping panoramas thanks to large glass doors and a side deck, a pantry, an office, a generous bar, an entertainment area, and all the seating you'd ever need. However, the Exuma's clearly been designed with outdoor living in mind, spacious sunbathing areas with accompanying chaise-longues, a fully equipped Jacuzzi and room to take a little light exercise means that, chances are, you'll be out on deck as often as you're reclining on Italian leather.

Moving amidships, the owner's area contains two staterooms with ensuite bathrooms and yet more glass, allowing stunning vistas

of the ocean or nearby coastline. The lower deck plays host to the guests and crew, yet, never the two shall meet, thanks to a system of double corridors, allowing staff and guests to access the deck using separate passages and stairs. The deck is comprised of two VIP cabins, and a twin, all with ensuite bathrooms, a gym that can be converted into another bedroom thanks to pull out beds and a nicely appointed head, a bathroom and a shower.

The crew quarters accommodate up to eight people. There are three crew cabins with a bathroom, the captain's cabin, a small dinette, a laundry room and a reasonably large galley with accompanying dumb waiter to access the upper decks.

While the British sensibility of Vitruvius Ltd. and French flair of Briand have created the ultimate yacht on the whole, Italian superiority in the field of design, courtesy of Perini Navi, has left an indelible mark on the Exuma. Both its exterior and interior spaces have been manipulated to enhance privacy among onboard guests yet encourage outdoor living at the same time. Internal fittings and furnishings were conceived by Perini Navi's team of designers to incorporate classic maritime style through elements such as teak, oak and Italian marble, infused with the sleekness and modernity of the 21<sup>st</sup> century. Needless to say, there's an ambiance of exciting luxury that permeates the air on all decks - it's not this year's Ultimate Boat for nothing. 📸

**WHAT** Picchiotti's Exuma

**WHO** Perini Navi's newly acquired motorboat division

**SPECS** Top speed: 16.5 knots, Range: 5,500 nm, Length: 50m,

**Crew:** 8, **Guests:** 10

**WHY** Looks stunning, goes like stink and is sumptuously kitted out. This boat even has the gall to be environmentally friendly to boot - Exuma excels in all fields.

[www.picchiotti.net](http://www.picchiotti.net)