



The  
world is  
yours

THE ITALIAN SEA GROUP

PICCHIOTTI  
SINCE 1600

Explore. Dream. Discover.

Mark Twain



# The world is yours

Grace E is not only the largest and most ambitious motoryacht launched to date by the Perini Navi Group, she is also the most complex and advanced. Since her delivery in 2014, she has covered over 30,000 nautical miles, criss-crossing the Atlantic, the Mediterranean and the North Sea. Along the way she has stopped off in New York, Stockholm, Copenhagen, Oslo, Edinburgh, London, Turkey and Greece. Simply put, Grace E adds a whole new dimension to ocean-going adventure and discovery.





The world  
is yours

Grace E is not only the largest and most ambitious motor yacht launched to date by the Feadt Yacht Group, she is also the most complex and advanced. Since her delivery in 2014, she has covered over 50,000 nautical miles, once-crossing the Atlantic, the Mediterranean and the North Sea. Along the way she has stopped off in New York, Stockholm, Copenhagen, Oslo, Edinburgh, London, Turkey and Greece. Simply put, Grace E adds a whole new dimension to cruise-going: adventure and discovery.





Conceived for long-range cruising, Grace E is able to roam the world's oceans in complete comfort and safety for weeks at a time. Following in the footsteps of her smaller Picchiotti-Vitruvius siblings—50m Exuma and 55m Galileo G, who both embarked on incident-free, multi-year circumnavigation voyages of their own—she pushes custom design, construction quality and efficient performance to new heights.





The key to Grace E's globetrotting vocation lies in her innovative diesel-electric and Azipod propulsion. With up to six high-speed generators providing over 4,400kW of power for both hotel services and propulsion, she has a top speed of 17.5 knots and a range in excess of 7,800 nautical miles at 12 knots—more than enough to cross the Atlantic twice without refuelling.





A cutting-edge power management system ensures that the generators always operate at maximum efficiency, producing exactly the right amount of power for navigation and hotel requirements at any one time. This means lower fuel consumption, less maintenance and fewer emissions.









# At your pleasure

Inside or out, day or night, Grace E offers multiple options for dining and relaxation on all deck levels. From a conversation in a cosy corner to a get together with family and friends, the pleasure is in the choosing.





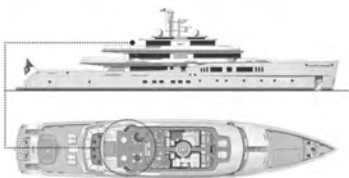
## At your pleasure

Inside or out, day or night, Grace E offers multiple options for dining and relaxation on all deck levels. From a conversation in a cosy corner to a get together with family and friends, the pleasure is in the choosing.













A starting point for the general arrangement was the 4-person Jacuzzi, gymnasium, hydrotherapy room, sauna, steam room, massage parlour and observation lounge on the wellness deck. Instead of a beach club sharing space with the array of water toys and tenders in the aft garage, which can only be used when the yacht is stationary, this lofty location takes full advantage of the large windows and panoramic views.

The sea, once it casts its spell, holds one  
in its net of wonder forever.

Jacques Yves Cousteau







## The nature of elegance

At 73m overall with a 13m beam, Grace E offers up to 20 per cent more interior volume than other yachts of equivalent length. This provided renowned designer Rémi Tessier with considerable scope to work his magic. Inspired by his interior aboard the Perini Navi sailing yacht Riela (now Asah), the owners called for a contemporary yet warm and casually chic interior.





## The nature of elegance

At 73m overall with a 13m beam, Grace E offers up to 20 per cent more interior volume than other yachts of equivalent length. This provided renowned designer Rémi Tessier with considerable scope to work his magic. Inspired by his interior aboard the Perini Navi sailing yacht Riela (now Asahi), the owners called for a contemporary yet warm and casually chic interior.





Tessier came up with a sensual palette of natural materials that includes wenge, Macassar ebony, brushed sycamore, limestone and parchment, which are contrasted with polished stainless steel accents and a metallic palladium finish.



Bleached as if by the sun and seawater, the sycamore panelling is contoured and rippled like wave-blown dunes. High-gloss Macassar ebony and a graphite resin finish complement the weathered tones and textures.



The master stateroom on the main deck is a 90-sqm oasis of space where artworks and sculptures punctuate the calming decor and add to the sense of serenity.







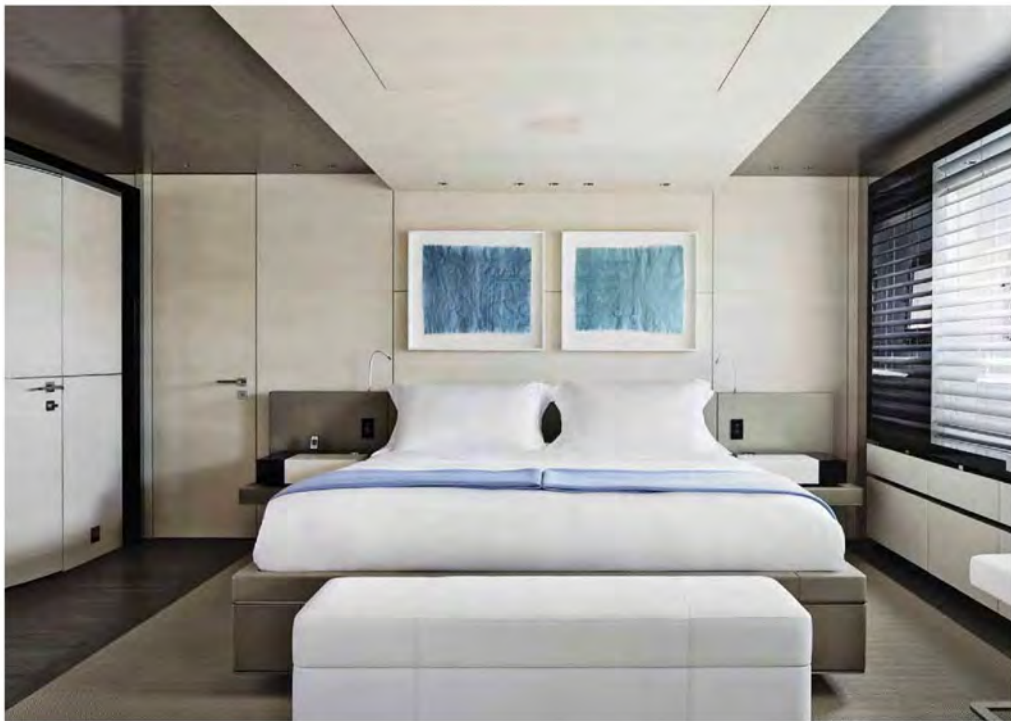
The clean contours and natural fabrics of pale aqua and dove grey are contrasted with exquisite detailing, such as the tiny "windows" of rock crystal embedded in the stairwell. The highly sophisticated interior design features plenty of glass and backlit white onyx to create a light and airy ambience.





Careful attention to the use of space, both inside and out, has resulted in a layout that is extremely functional yet supremely elegant. In addition to the master suite, there are six staterooms: two VIP guest cabins on the main deck, two king size staterooms and two twin berth (with Pullman) cabins on the lower deck, which can convert to VIP suites through connecting doors.









# The sound of silence

It is good to have an end to journey  
toward; but it is the journey that  
matters in the end.

Ernest Hemingway



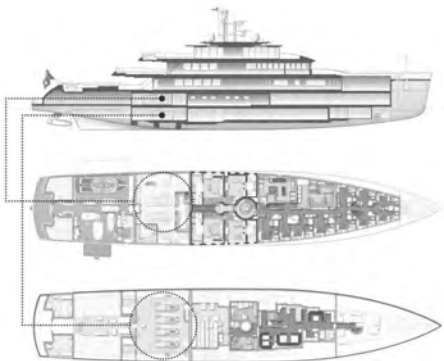


## The sound of silence

It is good to have an end to journey  
toward; but it is the journey that  
matters in the end.

Ernest Hemingway





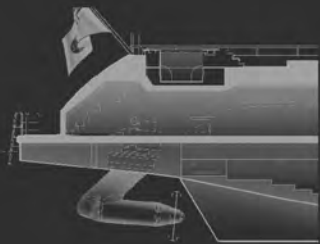
The advantages of diesel-electric propulsion for a yacht of Grace E's size and volume are numerous. In addition to enhanced efficiency and operational versatility, the absence of drive shafts and struts that transmit vibrations means she is much quieter than conventional yachts in her class. Indeed, noise levels in the master stateroom and main salon at 17 knots are just 46dB and 47dB respectively—equivalent to the hushed sound of a refrigerator or moderate rainfall.



Other major bonuses are redundancy and reliability. In fact, Grace E's owners opted for diesel-electric from the start after experiencing a cancelled cruise due to a generator malfunction. Multiple generators mean that a single failure will never ruin their enjoyment of their yacht.



The efficient propulsion system is backed up by an equally efficient hull design. Grace E's naval architecture and exterior styling are by Philippe Briand, the visionary racing sailboat designer responsible for the Vitruvius concept. His slippery hull form and plumb bow combine a maximum waterline length with very low resistance. The result is a beautifully refined and seaworthy yacht that is as at home exploring the Norwegian fjords as she is entertaining guests in Monte Carlo.





The propulsion system and azimuthing pods also provide Dynamic Positioning capability. This means the yacht can stay "on station" without having to deploy bottom-dragging anchors in protected marine environments, or when the seabed is too deep.



# A winning formula

Grace E represented a significant and challenging project for the in-house team, independent designers and specialist consultants alike. The design reference was to create a luxuriously comfortable, go-anywhere passagemaker that is in perfect harmony with its environment both in form and function. It is readily apparent from a host of industry accolades that the yacht has met—and surpassed—this test at every level.

## **2014 Baccarat Trophy**

Monaco Yacht Show

## **2015 ShowBoats Design Awards**

The Environmental Protection Award

## **2015 ShowBoats Design Awards**

The Exterior Design & Styling Award in the Motor Yacht over 500GT range

## **2015 ShowBoats Design Awards**

The Interior Design Award in the Motor Yacht over 500GT range

## **2015 ShowBoats Design Awards**

The Naval Architecture Award in the Displacement Motor Yacht range

## **2015 World Superyacht Awards**

Motor Yacht of the Year

## **2015 World Superyacht Awards**

Displacement Motor Yacht of 1,300GT to 2,999GT of Below 75m

## **2015 The International Superyacht Society**

Best Power 65m & Larger

